



# 2016 长城润滑油 中国房车锦标赛 第二站 - 珠海站

Sorted on Laps

超级杯1.6T组

Zhuhai International Track 4.300 km

第三回合决赛 (8圈) - 初步成绩

2016/6/5 09:35

Race (8 Laps) started at 9:38:39

Pos	No.	Name	Laps	Best Tm	In Lap	Diff	Gap	Total Tm	Team/Club	Model	Tires
1	5	何伟权	8	1:46.982	3			14:36.153	东风本田车队	思域	锦湖轮胎
2	1	张志强	8	1:48.462	3	5.967	5.967	14:42.120	东风悦达起亚车队	K3	锦湖轮胎
3	2	叶弘历	8	1:49.410	3	10.002	4.035	14:46.155	东风悦达起亚车队	K3	锦湖轮胎
4	8	陈旭	8	1:50.601	3	19.286	9.284	14:55.439	海马M6车队	海马M6	锦湖轮胎
5	6	谢欣哲	8	1:46.521	3	25.615	6.329	15:01.768	东风本田车队	思域	锦湖轮胎
6	7	邹思锐	8	1:51.046	2	35.919	10.304	15:12.072	东风本田车队	思域	锦湖轮胎
7	3	詹家图	8	1:49.017	3	50.053	14.134	15:26.206	东风悦达起亚车队	K3	锦湖轮胎
8	10	谢森	8	1:52.149	7	52.544	2.491	15:28.697	海马M6车队	海马M6	锦湖轮胎
9	9	何子贤	7	1:49.852	2	1 Lap	1 Lap	15:04.923	海马M6车队	海马M6	锦湖轮胎

Not classified (75% = 6 Laps)

DNF	4	林立峰	1		0	DNF		1:53.592	东风悦达起亚车队	K3	锦湖轮胎
DNF	12	梁欣荣	1		0	DNF		10:58.973	MZ Racing锐思车队	阿特兹	锦湖轮胎

Margin of Victory	Avg. Speed	Best Lap Tm	Best Spd	Best Lap by
5.967	141.345	1:46.521	145.323	6 - 谢欣哲

计时主管:

Orbits

赛事仲裁委员会

www.mylaps.com  
Licensed to: Isracing



# 2016 长城润滑油 中国房车锦标赛 第二站 - 珠海站

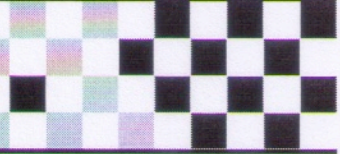
超级杯1.6T组

Zhuhai International Track 4.300 km

第三回合决赛 (8圈) - 初步成绩

2016/6/5 09:35

Race (8 Laps) started at 9:38:39



Lap	Time of Day	Lap Tm	S1 Tm	S2 Tm	S3 Tm
<b>(5) 何伟权</b>					
1	9:40:34.504				<b>38.608</b>
2	9:42:23.357	1:48.853			38.711
3	9:44:10.339	<b>1:46.982</b>			38.656
4	9:45:58.114	1:47.775			38.792
5	9:47:46.413	1:48.299			38.993
6	9:49:34.702	1:48.289			39.190
7	9:51:23.462	1:48.760			39.428
8	9:53:15.968	1:52.506			40.769

Lap	Time of Day	Lap Tm	S1 Tm	S2 Tm	S3 Tm
<b>(1) 张志强</b>					
1	9:40:35.675			34.771	<b>39.048</b>
2	9:42:25.327	1:49.652	<b>34.910</b>	34.939	39.803
3	9:44:13.789	<b>1:48.462</b>	34.999	<b>34.345</b>	39.118
4	9:46:02.381	1:48.592	34.978	34.360	39.254
5	9:47:51.341	1:48.960	35.158	34.436	39.366
6	9:49:41.066	1:49.725	35.335	34.700	39.690
7	9:51:31.144	1:50.078	35.458	34.851	39.769
8	9:53:21.935	1:50.791	35.602	34.684	40.505

Lap	Time of Day	Lap Tm	S1 Tm	S2 Tm	S3 Tm
<b>(2) 叶弘历</b>					
1	9:40:37.989			35.627	39.169
2	9:42:28.038	1:50.049	35.507	<b>34.564</b>	39.978
3	9:44:17.448	<b>1:49.410</b>	35.758	34.677	<b>38.975</b>
4	9:46:06.978	1:49.530	<b>35.133</b>	34.856	39.541
5	9:47:57.054	1:50.076	35.368	35.214	39.494
6	9:49:46.767	1:49.713	35.356	34.952	39.405
7	9:51:36.456	1:49.689	35.320	34.936	39.433
8	9:53:25.970	1:49.514	35.314	34.703	39.497

Lap	Time of Day	Lap Tm	S1 Tm	S2 Tm	S3 Tm
<b>(8) 陈旭</b>					
1	9:40:33.857				<b>39.392</b>
2	9:42:25.135	1:51.278			39.787
3	9:44:15.736	<b>1:50.601</b>			39.863
4	9:46:07.455	1:51.719			40.508
5	9:47:58.247	1:50.792			39.834
6	9:49:52.120	1:53.873			41.244
7	9:51:43.330	1:51.210			40.160
8	9:53:35.254	1:51.924			40.666

Lap	Time of Day	Lap Tm	S1 Tm	S2 Tm	S3 Tm
<b>(6) 谢欣哲</b>					
1	9:40:50.692			<b>38.171</b>	38.807
2	9:42:37.376	1:46.684			38.517
3	9:44:23.897	<b>1:46.521</b>			<b>38.475</b>
4	9:46:10.963	1:47.066			38.879
5	9:47:59.123	1:48.160			39.525
6	9:49:55.290	1:56.167			
7	9:51:49.644	1:54.354			41.279
8	9:53:41.583	1:51.939			40.464

Lap	Time of Day	Lap Tm	S1 Tm	S2 Tm	S3 Tm
<b>(7) 邹思锐</b>					
1	9:40:36.296			<b>35.133</b>	<b>38.878</b>
2	9:42:27.342	<b>1:51.046</b>			39.973
3	9:44:19.274	1:51.932			40.416
4	9:46:10.771	1:51.497			40.153
5	9:48:02.542	1:51.771			40.280
6	9:50:06.583	2:04.041	46.077	37.236	40.728
7	9:51:58.961	1:52.378	<b>36.915</b>	35.262	40.201
8	9:53:51.887	1:52.926	37.031	35.364	40.531

Lap	Time of Day	Lap Tm	S1 Tm	S2 Tm	S3 Tm
<b>(3) 詹家图</b>					
1	9:40:36.855			35.380	<b>39.041</b>
2	9:42:27.605	1:50.750	35.365	35.452	39.933
3	9:44:16.622	<b>1:49.017</b>	<b>35.025</b>	<b>34.606</b>	39.386
4	9:46:06.401	1:49.779	35.102	34.942	39.735

Lap	Time of Day	Lap Tm	S1 Tm	S2 Tm	S3 Tm
5	9:47:58.771	1:52.370	35.274	35.535	41.561
6	9:49:52.675	1:53.904	35.548	36.343	42.013
7	9:52:03.787	2:11.112	38.281	46.136	46.695
8	9:54:06.021	2:02.234	41.623	39.094	41.517

Lap	Time of Day	Lap Tm	S1 Tm	S2 Tm	S3 Tm
<b>(10) 谢森</b>					
1	9:40:42.373			36.242	42.702
2	9:42:53.337	2:10.964	54.839	35.507	40.618
3	9:44:45.493	1:52.156	36.103	35.441	<b>40.612</b>
4	9:46:38.626	1:53.133	36.696	35.530	40.907
5	9:48:31.143	1:52.517	36.346	35.506	40.665
6	9:50:23.424	1:52.281	36.072	<b>35.398</b>	40.811
7	9:52:15.573	<b>1:52.149</b>	<b>36.011</b>	35.492	40.646
8	9:54:08.512	1:52.939	36.593	35.469	40.877

Lap	Time of Day	Lap Tm	S1 Tm	S2 Tm	S3 Tm
<b>(9) 何子贤</b>					
1	9:40:38.387			36.535	39.309
2	9:42:28.239	<b>1:49.852</b>	35.668	34.880	<b>39.304</b>
p3	9:44:52.921	2:24.682	40.392	40.008	
4	9:48:08.390	3:15.469		34.812	39.586
5	9:49:58.494	1:50.104	35.795	<b>34.522</b>	39.787
6	9:51:48.921	1:50.427	<b>35.153</b>	35.184	40.090
7	9:53:44.738	1:55.817			43.035

Lap	Time of Day	Lap Tm	S1 Tm	S2 Tm	S3 Tm
<b>(4) 林立峰</b>					
1	9:40:33.407			<b>34.289</b>	<b>39.631</b>

Lap	Time of Day	Lap Tm	S1 Tm	S2 Tm	S3 Tm
<b>(12) 梁欣荣</b>					
p1	9:49:38.788				

计时主管: 

赛事仲裁委员会

Orbits

live.ctcc.com.cn