



2016 长城润滑油 中国房车锦标赛 第二站 - 珠海站

Sorted on Laps

超级杯1.6T组

Zhuhai International Track 4.300 km

第四回合决赛 (8圈) -初步成绩

2016/6/5 13:45

Race (8 Laps) started at 13:48:18

Pos	No.	Name	Laps	Best Tm	In Lap	Diff	Gap	Total Tm	Team/Club	Model	Tires
1	6	谢欣哲	8	1:55.700	2			15:32.889	东风本田车队	思域	锦湖轮胎
2	3	詹家图	8	1:55.618	8	0.910	0.910	15:33.799	东风悦达起亚车队	K3	锦湖轮胎
3	1	张志强	8	1:55.869	2	2.773	1.863	15:35.662	东风悦达起亚车队	K3	锦湖轮胎
4	2	叶弘历	8	1:56.260	3	12.299	9.526	15:45.188	东风悦达起亚车队	K3	锦湖轮胎
5	8	陈旭	8	1:56.708	7	15.280	2.981	15:48.169	海马M6车队	海马M6	锦湖轮胎
6	10	谢森	8	1:57.325	2	28.712	13.432	16:01.601	海马M6车队	海马M6	锦湖轮胎
7	9	何子贤	8	1:55.248	5	29.752	1.040	16:02.641	海马M6车队	海马M6	锦湖轮胎

Not classified (75% = 6 Laps)

DNF	5	何伟权	5	1:56.341	3	DNF		9:52.112	东风本田车队	思域	锦湖轮胎
DNF	7	邹思锐	5	1:56.633	5	DNF		9:56.099	东风本田车队	思域	锦湖轮胎
DNF	4	林立峰			0	DNF			东风悦达起亚车队	K3	锦湖轮胎
DNF	12	梁欣荣			0	DNF			MZ Racing锐思车队	阿特兹	锦湖轮胎

Margin of Victory	Avg. Speed	Best Lap Tm	Best Spd	Best Lap by
0.910	132.749	1:55.248	134.319	9 - 何子贤

计时主管:

赛事仲裁委员会

Orbits

www.mylaps.com
Licensed to: Isracing

2016 长城润滑油 中国房车锦标赛 第二站 - 珠海站

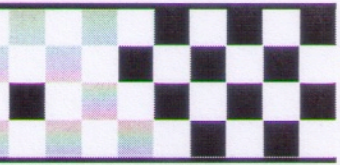
超级杯1.6T组

Zhuhai International Track 4.300 km

第四回合决赛 (8圈) - 初步成绩

2016/6/5 13:45

Race (8 Laps) started at 13:48:18



Lap	Time of Day	Lap Tm	S1 Tm	S2 Tm	S3 Tm
(6) 谢欣哲					
1	13:50:18.259				42.357
2	13:52:13.959	1:55.700	36.592	36.427	42.681
3	13:54:10.094	1:56.135	36.696	36.794	42.645
4	13:56:06.478	1:56.384			42.646
5	13:58:02.749	1:56.271	36.808	36.694	42.769
6	13:59:59.153	1:56.404	36.796	36.767	42.841
7	14:01:55.434	1:56.281	37.117	36.670	42.494
8	14:03:51.851	1:56.417	36.633	37.130	42.654
(3) 詹家图					
1	13:50:19.332			36.912	42.397
2	13:52:15.040	1:55.708	36.611	36.509	42.588
3	13:54:11.712	1:56.672	37.042	36.789	42.841
4	13:56:08.627	1:56.915	36.930	37.014	42.971
5	13:58:05.069	1:56.442	36.886	36.674	42.882
6	14:00:01.257	1:56.188	36.762	36.495	42.931
7	14:01:57.143	1:55.886	36.815	36.746	42.325
8	14:03:52.761	1:55.618	36.763	36.384	42.471
(1) 张志强					
1	13:50:19.807			37.017	42.596
2	13:52:15.676	1:55.869	36.407	36.609	42.853
3	13:54:12.217	1:56.541	36.602	37.042	42.897
4	13:56:09.075	1:56.858	36.689	37.172	42.997
5	13:58:05.870	1:56.795	36.806	37.063	42.926
6	14:00:02.091	1:56.221	36.622	36.688	42.911
7	14:01:58.136	1:56.045	36.517	36.732	42.796
8	14:03:54.624	1:56.488	36.624	36.297	43.567
(2) 叶弘历					
1	13:50:21.255			38.520	43.097
2	13:52:18.608	1:57.353	37.514	37.240	42.599
3	13:54:14.868	1:56.260	37.183	36.618	42.459
4	13:56:12.435	1:57.567	37.266	37.080	43.221
5	13:58:11.372	1:58.937	37.823	37.173	43.941
6	14:00:08.780	1:57.408	37.295	36.968	43.145
7	14:02:06.588	1:57.808	37.517	37.114	43.177
8	14:04:04.150	1:57.562	37.189	37.170	43.203
(8) 陈旭					
1	13:50:21.968				43.716
2	13:52:20.450	1:58.482			43.266
3	13:54:21.096	2:00.646			46.453
4	13:56:18.840	1:57.744			43.918
5	13:58:16.471	1:57.631			43.290
6	14:00:13.695	1:57.224			42.676
7	14:02:10.403	1:56.708			43.059
8	14:04:07.131	1:56.728			43.323
(10) 谢森					
1	13:50:22.582			37.021	42.979
2	13:52:19.907	1:57.325	37.241	37.095	42.989
3	13:54:18.383	1:58.476	37.786	37.620	43.070
4	13:56:16.646	1:58.263	37.894	36.936	43.433
5	13:58:15.937	1:59.291	37.665	37.309	44.317
6	14:00:16.370	2:00.433	37.699	38.601	44.133
7	14:02:19.332	2:02.962	39.904	38.209	44.849
8	14:04:20.563	2:01.231	39.681	37.280	44.270
(9) 何子贤					
1	13:50:41.838			38.705	44.613
2	13:52:42.428	2:00.590			44.348
3	13:54:41.156	1:58.728			43.584
4	13:56:37.355	1:56.199	37.034	36.521	42.644

Lap	Time of Day	Lap Tm	S1 Tm	S2 Tm	S3 Tm
5	13:58:32.603	1:55.248	36.679	36.190	42.379
6	14:00:30.119	1:57.516	37.587	37.092	42.837
7	14:02:26.071	1:55.952	37.321	36.225	42.406
8	14:04:21.603	1:55.532	36.974	36.351	42.207
(5) 何伟权					
1	13:50:21.542			37.027	43.911
2	13:52:19.157	1:57.615	37.112	37.401	43.102
3	13:54:15.498	1:56.341	36.802	36.841	42.698
4	13:56:12.668	1:57.170	36.889	36.995	43.286
5	13:58:11.074	1:58.406			43.463
(7) 邹思锐					
1	13:50:24.258			38.297	43.962
2	13:52:22.780	1:58.522	37.487	37.462	43.573
3	13:54:21.601	1:58.821	38.390	37.426	43.005
4	13:56:18.428	1:56.827	37.439	36.285	43.103
5	13:58:15.061	1:56.633	36.629	36.775	43.229

计时主管: 

赛事仲裁委员会

Orbits

live.ctcc.com.cn