



2016 长城润滑油 中国房车锦标赛 第六站 - 上海站

Sorted on Laps

中国杯

Shanghai International Circuit 4.602 km

第十一回合决赛 (7圈) - 初步成绩

2016/9/24 13:50

Race (7 Laps) started at 13:54:05

Pos	No.	Name	Best Tm	Laps	Total Tm	In Lap	Diff	Gap	Team/Club	Model	Tires
1	12	朱震宇	2:20.490	7	16:31.565	3			斐讯车队	威驰	锦湖轮胎
2	3	杨曦	2:20.322	7	16:32.028	3	0.463	0.463	北京现代纵横车队	瑞奕	锦湖轮胎
3	9	吴晓峰	2:20.087	7	16:32.837	6	1.272	0.809	GRT车队	新飞度	锦湖轮胎
4	6	刘洋	2:20.747	7	16:35.552	6	3.987	2.715	广汽丰田YARIS L致炫车队	YARIS L致炫	锦湖轮胎
5	8	陈沪平	2:20.529	7	16:35.640	3	4.075	0.088	广汽丰田YARIS L致炫车队	YARIS L致炫	锦湖轮胎
6	4	张汉标	2:19.789	7	16:36.482	3	4.917	0.842	北京现代纵横车队	瑞奕	锦湖轮胎
7	17	梁凯风	2:20.725	7	16:36.973	6	5.408	0.491	上海CUS车队	雨燕	锦湖轮胎
8	31	叶俊辉	2:20.698	7	16:39.385	3	7.820	2.412	广汽丰田YARIS L致炫车队	YARIS L致炫	锦湖轮胎
9	27	邓保维	2:20.598	7	16:42.560	7	10.995	3.175	北京现代纵横车队	瑞奕	锦湖轮胎
10	2	孙超	2:20.631	7	16:44.411	7	12.846	1.851	北京现代纵横车队	瑞奕	锦湖轮胎
11	21	陈澍	2:24.286	7	17:12.063	5	40.498	27.652	I Think Racing车队	MG3	锦湖轮胎
12	11	万金存	2:25.270	7	17:14.482	7	42.917	2.419	斐讯车队	威驰	锦湖轮胎
13	19	陈凯洲	2:24.480	7	17:15.056	4	43.491	0.574	星之路车队	New POLO	锦湖轮胎
14	20	贺兮兮	2:22.204	7	17:28.935	3	57.370	13.879	I Think Racing车队	MG3	锦湖轮胎
15	13	夏禹	2:19.248	6	16:46.006	6	1 Lap	1 Lap	斐讯车队	威驰	锦湖轮胎
16	23	贺泽昱	2:22.944	6	17:26.342	6	1 Lap	40.336	北京锐思车队	昂科塞拉	锦湖轮胎

Not classified (75% = 6 Laps)

DNF	22	邓晓文	2:21.871	6	14:26.581	3	DNF		北京锐思车队	昂科塞拉	锦湖轮胎
DNF	18	鲁子房	2:31.232	4	10:30.361	2	DNF		星之路车队	New POLO	锦湖轮胎
DNF	5	刘毅锋		1	2:40.491	0	DNF		广汽丰田YARIS L致炫车队	YARIS L致炫	锦湖轮胎
DNF	16	王争		1	3:21.539	0	DNF		上海CUS车队	雨燕	锦湖轮胎
DNF	10	李程				0	DNF		GRT车队	新飞度	锦湖轮胎

Margin of Victory

Avg. Speed

Best Lap Tm

Best Spd

Best Lap by

0.463

116.957

2:19.248

118.976

13 - 夏禹

计时主管:

Orbits

赛事仲裁委员会:

www.mylaps.com

Licensed to: 上海力盛体育文化传播有限公司



2016 长城润滑油 中国房车锦标赛 第六站 - 上海站

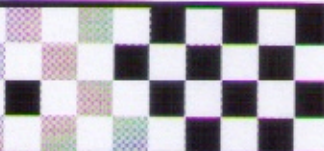
中国杯

Shanghai International Circuit 4.602 km

第十一回合决赛 (7圈) - 初步成绩

2016/9/24 13:50

Race (7 Laps) started at 13:54:05



Lap	Time of Day	Lap Tm	S1 Tm	S2 Tm	S3 Tm
(12) 朱震宇					
1	13:56:27.999			37.486	51.261
2	13:58:49.996	2:21.727	51.466	37.830	52.422
3	14:01:10.186	2:20.490	51.615	37.658	51.217
4	14:03:31.445	2:21.259	51.807	37.958	51.494
5	14:05:52.646	2:21.201	51.487	38.369	51.385
6	14:08:13.809	2:21.163	52.516	37.815	50.832
7	14:10:37.092	2:23.283	53.295	38.555	51.423
(3) 杨璜					
1	13:56:29.350			37.745	52.116
2	13:58:50.885	2:21.515	51.371	37.744	52.400
3	14:01:11.187	2:20.322	51.202	38.063	51.057
4	14:03:31.823	2:20.636	51.209	37.918	51.509
5	14:05:52.898	2:21.075	51.485	38.570	51.040
6	14:08:14.082	2:21.184	51.453	38.142	51.589
7	14:10:37.555	2:23.473	53.184	38.849	51.440
(9) 吴晓峰					
1	13:56:31.317			38.755	50.967
2	13:58:54.664	2:23.347	51.807	38.946	52.592
3	14:01:15.294	2:20.630	51.932	37.614	51.084
4	14:03:36.284	2:20.990	51.945	38.315	50.730
5	14:05:56.597	2:20.313	51.621	37.819	50.873
6	14:08:16.884	2:20.087	51.730	37.793	50.564
7	14:10:39.364	2:21.690	51.974	37.902	51.904
(6) 刘洋					
1	13:56:29.786			38.055	51.492
2	13:58:52.496	2:22.710	51.775	37.955	52.900
3	14:01:14.784	2:22.288	52.098	38.206	51.904
4	14:03:36.664	2:21.880	51.588	38.245	52.047
5	14:05:57.796	2:21.132	51.487	38.133	51.512
6	14:08:18.543	2:20.747	51.495	38.010	51.242
7	14:10:41.079	2:22.536	51.803	38.592	52.141
(9) 陈沪平					
1	13:56:31.774			38.674	51.076
2	13:58:53.926	2:22.154	51.463	38.299	52.392
3	14:01:14.457	2:20.829	51.426	37.815	51.288
4	14:03:35.671	2:21.214	51.385	37.994	51.835
5	14:05:56.861	2:21.180	51.230	38.122	51.828
6	14:08:18.912	2:22.061	52.022	38.016	52.023
7	14:10:41.167	2:22.255	51.970	38.622	51.663
(4) 张汉标					
1	13:56:29.591			37.959	51.748
2	13:58:52.068	2:22.477	51.691	37.675	53.111
3	14:01:11.857	2:19.789	51.407	37.895	50.687
4	14:03:32.391	2:20.534	51.363	37.894	51.477
5	14:05:53.391	2:21.000	51.913	37.921	51.166
6	14:08:15.885	2:22.294	52.675	37.918	51.701
7	14:10:42.009	2:28.324	55.564	38.551	52.209
(17) 梁凯风					
1	13:56:33.463			40.027	51.094
2	13:58:54.864	2:21.401	51.844	37.709	52.049
3	14:01:16.198	2:21.334	52.141	37.751	51.442
4	14:03:37.048	2:20.850	52.083	37.793	50.974
5	14:05:58.445	2:21.397	51.917	37.614	51.066
6	14:08:19.170	2:20.726	52.060	37.764	50.901
7	14:10:42.500	2:23.330	52.606	38.333	52.391
(31) 叶俊卿					
1	13:56:34.560			39.955	52.014

Lap	Time of Day	Lap Tm	S1 Tm	S2 Tm	S3 Tm
2	13:58:55.740	2:21.171	51.630	37.789	51.752
3	14:01:16.436	2:20.698	51.905	37.671	51.122
4	14:03:37.322	2:20.884	52.229	37.695	50.980
5	14:05:59.337	2:22.015	51.868	37.791	52.366
6	14:08:21.031	2:21.694	52.141	38.119	51.434
7	14:10:44.912	2:23.881	52.291	38.797	52.793
(27) 邓保维					
1	13:56:37.901			41.491	51.019
2	13:59:03.481	2:25.580	55.097	39.030	51.453
3	14:01:24.493	2:21.012	51.679	36.232	51.101
4	14:03:45.647	2:21.154	51.504	37.802	51.848
5	14:06:06.761	2:21.114	52.128	37.992	50.994
6	14:08:27.489	2:20.728	51.382	38.150	51.196
7	14:10:48.067	2:20.698	51.261	38.113	51.234
(2) 孙超					
1	13:56:37.354			38.800	52.428
2	13:59:04.442	2:27.088	55.293	39.121	52.684
3	14:01:25.552	2:21.110	51.334	38.329	51.448
4	14:03:46.824	2:21.272	51.925	38.040	51.307
5	14:06:08.484	2:21.680	51.925	38.344	51.391
6	14:08:29.307	2:20.823	51.646	37.822	51.356
7	14:10:49.930	2:20.631	51.357	37.921	51.353
(21) 陈萧					
1	13:56:40.249			39.251	53.662
2	13:59:08.802	2:28.553	54.205	41.813	52.535
3	14:01:37.187	2:28.385	56.731	39.002	52.652
4	14:04:02.517	2:25.330	53.223	38.528	53.579
5	14:06:26.803	2:24.286	53.253	38.378	52.655
6	14:08:51.831	2:25.028	53.219	38.964	52.846
7	14:11:17.590	2:25.759	54.017	38.891	53.061
(11) 王金存					
1	13:56:37.616			38.940	52.647
2	13:59:07.501	2:29.885	55.349	40.249	54.287
3	14:01:35.165	2:27.664	53.789	39.463	54.412
4	14:04:01.900	2:26.735	53.266	39.939	54.530
5	14:06:27.621	2:25.721	53.162	38.956	53.703
6	14:08:54.739	2:27.118	52.696	39.167	55.255
7	14:11:20.009	2:26.270	52.873	38.970	53.427
(19) 陈凯洲					
1	13:56:39.612			39.156	53.606
2	13:59:16.215	2:36.603	53.989	40.849	53.766
3	14:01:41.697	2:25.492	53.268	39.543	52.671
4	14:04:06.177	2:24.480	53.120	38.743	52.617
5	14:06:30.807	2:24.630	52.856	38.796	52.978
6	14:08:55.364	2:24.557	53.122	38.932	52.803
7	14:11:20.583	2:26.219	53.670	38.876	52.773
(20) 贾少宇					
1	13:56:36.097			40.529	52.317
2	13:58:58.505	2:22.408	52.952	37.907	51.549
3	14:01:20.709	2:22.204	52.099	38.228	51.877
4	14:03:48.032	2:27.323	53.891	40.133	53.309
5	14:06:18.795	2:30.763	53.472	42.187	55.104
6	14:08:56.091	2:37.296	56.698	44.608	55.990
7	14:11:34.462	2:38.371	58.485	44.350	55.538
(13) 夏磊					
1	13:56:28.526			37.668	52.038
2	13:58:51.472	2:22.944	51.733	37.572	53.639
p3	14:02:10.056	3:18.584	1:03.723	56.612	
4	14:06:12.523	4:02.467		38.021	51.318

计时主管: [Signature]

赛事仲裁委员会:

Orbits

live.ctcc.com.cn



2016 长城润滑油 中国房车锦标赛 第六站 - 上海站

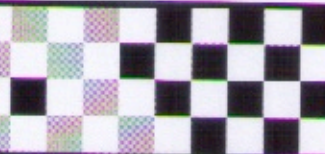
中国杯

Shanghai International Circuit 4.602 km

第十一回合决赛 (7圈) - 初步成绩

2016/9/24 13:50

Race (7 Laps) started at 13:54:05



Lap	Time of Day	Lap Tm	S1 Tm	S2 Tm	S3 Tm
5	14:08:32.285	2:19.782	51.408	37.600	50.758
6	14:10:51.533	2:18.248	50.865	37.574	50.809

Lap	Time of Day	Lap Tm	S1 Tm	S2 Tm	S3 Tm
-----	-------------	--------	-------	-------	-------

(23) 贺洋星

1	13:56:37.300			39.732	52.127
2	13:59:25.389	2:48.089	1:04.565	45.142	58.382
3	14:02:17.708	2:52.319	1:03.405	44.127	1:04.787
p4	14:05:24.628	3:08.920	1:07.124	44.596	
5	14:09:08.925	3:44.297		38.400	52.640
6	14:11:31.869	2:22.944	52.519	38.361	52.064

(22) 邓晓文

1	13:56:36.415			38.788	52.778
2	13:58:59.464	2:23.049	53.023	38.321	51.705
3	14:01:21.335	2:21.871	51.991	38.301	51.579
4	14:03:45.738	2:24.403	52.826	38.424	53.153
5	14:06:08.976	2:23.236	52.604	38.547	52.087
6	14:08:32.108	2:23.132	52.307	38.498	52.329

(18) 鲁子房

1	13:56:35.770			38.938	52.687
2	13:59:07.002	2:31.232	56.241	39.768	55.223
3	14:01:40.985	2:33.983	59.277	40.276	54.430
p4	14:04:35.688	2:54.903	1:00.365	44.681	

(5) 刘敬峰

p1	13:56:46.018			39.770	
----	--------------	--	--	--------	--

(16) 王争

p1	13:57:27.066			47.772	
----	--------------	--	--	--------	--

计时主任:

赛事仲裁委员会:

Orbits

live.ctcc.com.cn